

TWO SONGS FOR EMERGING TENOR BASS CHOIR

I. She Walks in Beauty II. Travel

TT Voices with Piano

Noah Reese

BriLee Music
Part-by-Part



Free MP3 rehearsal and accompaniments
Go to: www.BriLeeMusic.com

Ranges:



Language: English
Use: General/Festival
Time: Approx. I. 2:29, II. 3:00
*Difficulty: Moderate

Notes

Lord Byron was inspired to write the beautiful poem *She Walks in Beauty* upon meeting the wife of his first cousin in 1813.

With limited ranges, beneficial for the emerging tenor bass choir, the piece is written in a way that will give young singers a chance to:

- Employ syllable and word stress by emphasizing important syllables/ words in eighth note patterns
- Introduce easy harmonic sections that build the foundation of two-part singing

The haunting poem *Travel* by Edna St. Vincent Millay is about the innate and unquestionable longing to travel away from home, represented by the speaker's willingness to get on a train regardless of the destination. The piece is written with a repetitive piano part which mimics the sound of a train's wheels, while the mixed meter and use of parallel motion is meant to give the audience a sense of not being settled in the life being led.

Travel moves back and forth between minor and major, affording emerging singers opportunities to experience accidentals and chromatic movement. Due to a slightly higher difficulty, the repeat at the end of the song and the second verse are optional.

About the Composer

Noah Reese is currently in his tenth year of teaching at the middle school level in the Cypress Fairbanks ISD. He began singing and playing the piano at an early age and started composing music in high school. Noah has composed four pieces for the middle school UIL Concert and Sight-Reading contest published through RBC music.

Noah earned his B.A. in Music Education from Bloomsburg University in Bloomsburg, PA. He enjoys teaching, composing and singing with the Texas Master Chorale.

Two Songs for Emerging Tenor/Bass Choir

3

for TT Voices with Piano

LORD BYRON

NOAH REESE

1. She Walks in Beauty

Tenderly ♩ = 86

Piano

4 Tenor 1

8 Tenor 2 *mp*

She walks in beau-ty like the night

7 *mp*

of cloud-less climes and star-ry skies.

8

3

mf

And all that's best of dark and light meet in her as - pect and her

mf

And all that's best of dark and light meet in her as - pect and her

eyes.

mp

eyes.

One shade the more, one ray the less

mp

had half im - paired thy name - less grace _____

mf

which waves in ev - 'ry

mf

which waves in ev - 'ry

18

rav - en tress, or soft - ly light-ens o'er her face.

21 **Slightly faster**

So soft, so calm yet
 So calm yet

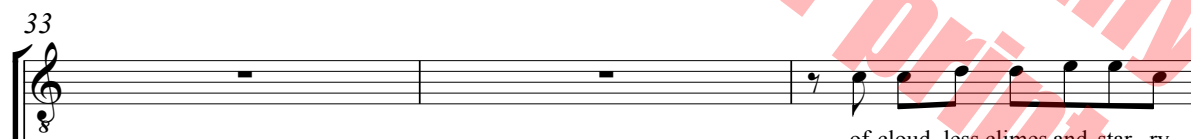
Slightly faster

24

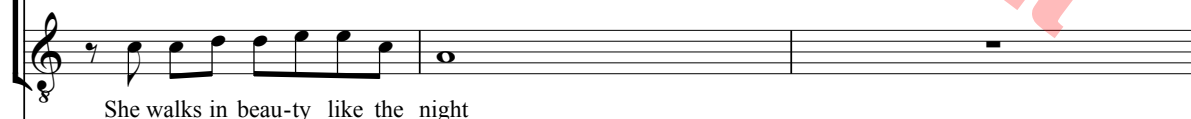
el - - o - quent. The smiles that
 el - - lo - quent.

6

27

a tempo

of cloud-less climes and star-ry



36 *mf*

skies. And all that's best of dark and light

mf

And all that's best of dark and light

mf

3

39 *rit. to end* *mp*

meet in her as-pect and her eyes. She walks in beau - ty.

mp

meet in her as-pect and her eyes. She walks in beau - ty

rit. to end *mp*

42

She walks in beau - ty like the night.

like the night.

EDNA ST. VINCENT MILLAY

NOAH REESE

Moderato (♩ = c. 108)

Tenor 1

Tenor 2

1. The

1. The

Moderato (♩ = c. 108)

Piano

p

5 (opt. repeat)

rail - road tracks are a miles a way.
night there's not a train goes by.

rail - road tracks are a miles a way.
night there's not a train goes by.

8

The day is loud with voice - es speak - ing.
The night is still for sleep and dream - ing.

The day is loud with voice - es speak - ing.
The night is still for sleep and dream - ing.

12

There's... not see a train goes by — all the day,
Yet I see it's cin - ders red on the sky,

There's... not see a train goes by — on all the day,
Yet I see it's cin - ders red on the sky,

16

but I hear, I hear the whis - - tle
and I hear, I hear the en - - gine

but I hear, I hear the whis - - tle
and I hear, I hear the en - - gine

19

shriek - - - ing. My heart is
steam - - - ing.

shriek - - - ing. My heart is
steam - - - ing.

10

22

For promotional use only

warm with friends I make, and

warm with friends I make, and

25

For promotional use only

bet - ter friends I'll ne - ver know.

bet - ter friends I'll ne - ver know.

28

For promotional use only

Yet there's not a train I would - n't

Yet there's not a train I would - n't

32

rit.

take, no mat - ter where on Earth it may

take, no mat - ter where on Earth it may

rit.

a tempo

35 [1. opt. repeat

go. 2. All

go. 2. All

a tempo

1.

a tempo

39 2.

go. *rit.*

go. *a tempo*

2. *rit.*

BriLee Music

the Voice of Choral Music

BriLee Music, founded by the late Brian Busch in 1997, is the leader in publishing choral music written specifically for the developing middle school and junior high singer.

With writing guidelines carefully developed by Brian, teachers who buy from the BriLee catalog know they will always find the following in music written by BriLee composers:

- Range appropriate – specifically for the adolescent changing voice
- Moderate in length
- Interesting, appealing and varied texts
- Accessible accompaniments

Writers for BriLee are among the most outstanding and respected in their field. The music is written, arranged and edited to meet a wide range of performance needs. The standard of musical excellence we present in each choral work is designed to meet the challenges faced by teachers and conductors all over the world who wish to offer quality, accessible repertoire to their ensembles.

BriLee Music **Part-by-Part**

Free MP3 rehearsal and accompaniments

Go to: www.BriLeeMusic.com

Part-by-Part resources were created to allow you, the busy choral director, more time to do the things you need to do to be successful in rehearsal and performance.

Download the following FREE resources and use them to help you TEACH your singers.



- Part-dominant recordings allow your singers to sing along with their part while hearing the other voices in the background.
- Full chorus recordings allow your singers to see and hear the music at the same time for greater insight.
- Professional accompaniments can be used for rehearsal or performance.

BriLee Music
the Voice of Choral Music

BL1067



6 80160 91178 3

Exclusively Distributed by
CARL FISCHER®
www.carlfischer.com