

# ELETELEPHONY

Two-Part Treble Voices with Piano

Dave and Jean Perry

*BriLee Music*  
**Part-by-Part**



Free MP3 rehearsal and accompaniments  
Go to: [www.BriLeeMusic.com](http://www.BriLeeMusic.com)

Ranges:



Language: English

Use: General

Time: Approx. 2:30

\*Difficulty: Moderate

**BriLee Music**  
*the Voice of Choral Music*

## Notes

*Eletelephony* is a good vehicle for introducing intervals. If your choir uses Sol-fa, this song circles around Do and Sol, with excursions to Ti and Re.

Helpful teaching suggestions:

- In the initial learning of *Eletelephony*, involve your singers by signing the solfege syllables of the opening verse at m. 4.
- Once the main theme is learned, it may be used as an abbreviated round at m. 18.
- Measure 23 may be introduced as an echo pattern.
- Call and response is used at m. 33 as Part 2 echoes Part 1.
- Let the dynamics help with the text and mood of this fun song.
- Mostly, have FUN learning and singing this playful song!!

## About the Composer

Nationally-known composers and choral directors, Dave and Jean Perry are both retired music educators. They have been writing and publishing songs for schools and churches for over thirty years. Choirs in Europe, Asia, Africa, South America, North America and Australia have performed their music. They have over three hundred songs in print and are recipients of multiple special composers awards from ASCAP.

Since moving to Sierra Vista in 2002, they have become active in several community musical groups.

They are both active members of HASRA (Huachuca Area School Retirees Association), NAFME (National Association for Music Education), ACDA (American Choral Directors Association) and ASCAP (American Society of Composers, Authors and Publishers). Dave and Jean are both recipients of the “Excellence in Teaching” award, the “Arizona Music Educators of the Year” honor, and the William E. Richardson “Retired Music Educator Service Award” from the Arizona Music Educators Association and the “Lifetime Recognition Award” from the Choral Directors of Arizona. In 2011, they received the Sierra Vista Mayor’s Arts Award for their contributions to the arts community.

# Eletelephony

for Two-Part Treble Voices with Piano

LAURA E. RICHARDS (1850–1943)

DAVE AND JEAN PERRY

from *Tirra Lirra*

Lightly ♩ = 96

Piano



The piano introduction consists of three measures. The first measure starts with a forte (f) dynamic and features a treble clef staff with a dotted quarter note G4, a quarter note A4, and a dotted quarter note Bb4, and a bass clef staff with a dotted quarter note G3, a quarter note A3, and a dotted quarter note Bb3. The second measure continues with a treble clef staff with a quarter note G4, a quarter note A4, and a quarter note Bb4, and a bass clef staff with a quarter note G3, a quarter note A3, and a quarter note Bb3. The third measure ends with a piano (p) dynamic and features a treble clef staff with a quarter rest, a quarter note G4, and a quarter note A4, and a bass clef staff with a quarter note G3, a quarter note A3, and a quarter note Bb3.

4 Part 1 *mf*

O, once there was an el - e - phant, who

Part 2 *mf*

O, once there was an el - e - phant, who



Measures 4-6 of the vocal and piano accompaniment. The vocal parts (Part 1 and Part 2) are in treble clef with a mezzo-forte (mf) dynamic. The piano accompaniment is in 4/4 time with a mezzo-forte (mf) dynamic. The lyrics are: "O, once there was an el - e - phant, who".

7

tried to use the tel - e - phant. No,

tried to use the tel - e - phant. No,



Measures 7-9 of the vocal and piano accompaniment. The vocal parts continue with the lyrics: "tried to use the tel - e - phant. No,". The piano accompaniment continues with a mezzo-forte (mf) dynamic.

no! I mean an el - e - phone who

no! I mean an el - e - phone who

tried to use the tel - e - phone. Dear me! Dear me! I

tried to use the tel - e - phone. Dear me! Dear me! I

am not cer - tain quite that e - ven now I've got it

am not cer - tain quite that e - ven now I've got it

16

right. *mf* O, once there was an el - e-phant, who

right. *mf* O, once there was an el - e -

19

tried to use the tel - e - phant. No, no! I mean an el - e - phone who

phant, who tried to use the tel - e - phant. No, no! I mean an el - e -

21

tried to use the tel - e - phone. *mp* Dear

phone who tried the tel - e - phone. *mp*

23

me! Dear me! I am not cer - tain quite that

*mp*

Dear me! Dear me! I am not cer - tain quite that

25

e - ven now I've got it right. How

*mf*

e - ven now I've got it right.

28

e'er it was, he got his trunk en - tan - gled in the tel - e - phunk; The

*mf*

How - e'er he got en - tan - gled in the tel - e - phunk;

*mf*

30

more he tried to get it free, the loud - er buzzed the tel - e - phoe. *f*

The more he tried to free, the loud - er buzzed the tel - e - phoe. *f*

32

O, once there was an el - e - phant, who *mf*

O, once there was an el - e - phant, *mf*

35

tried to use the tel - e - phant. No,

who tried to use the tel - e - phant.

37

no! I mean an el - e-phone who tried to use the tel - e-phone.

No, no! I mean an el - e-phone who

40

*mp* Dear me! Dear me! I am not cer-tain quite that

tried to use the tel - e-phone. *mp* Dear me! Dear me! I am not cer-tain quite that

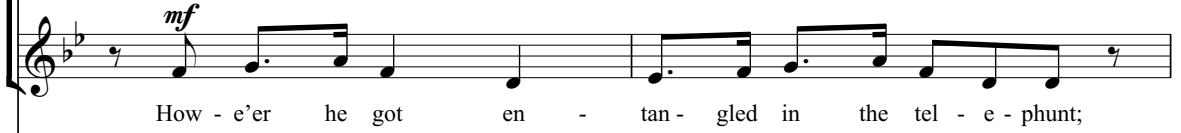
43

e - ven now I've got it right. *mf* How

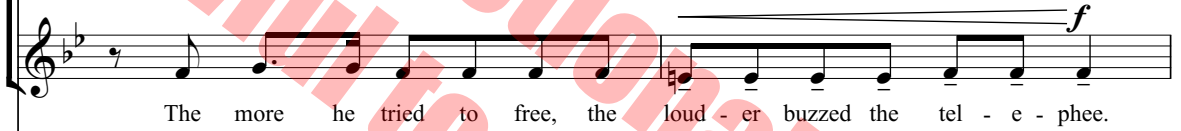
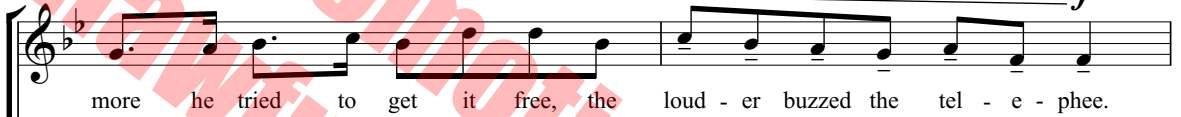
e - ven now I've got it right.



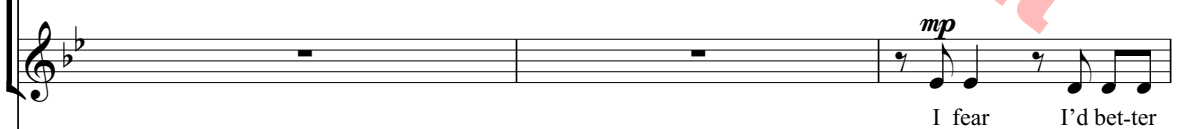
46



48



50



53

drop the song of el - e - phop and tel - e -

drop the song of el - e - phop and tel - e -

55

phong! *mf* I fear I'd bet - ter *f* drop the song of

phong! *mf* I fear I'd bet - ter drop the song of *f*

58

el - e - phop and tel - e - phong!

el - e - phop and tel - e - phong!

**For promotional use only  
unlawful to copy or print**

# BriLee Music

*the Voice of Choral Music*

BriLee Music, founded by the late Brian Busch in 1997, is the leader in publishing choral music written specifically for the developing middle school and junior high singer.

With writing guidelines carefully developed by Brian, teachers who buy from the BriLee catalog know they will always find the following in music written by BriLee composers:

- Range appropriate – specifically for the adolescent changing voice
- Moderate in length
- Interesting, appealing and varied texts
- Accessible accompaniments

Writers for BriLee are among the most outstanding and respected in their field. The music is written, arranged and edited to meet a wide range of performance needs. The standard of musical excellence we present in each choral work is designed to meet the challenges faced by teachers and conductors all over the world who wish to offer quality, accessible repertoire to their ensembles.

## **BriLee Music** **Part-by-Part**

Free MP3 rehearsal and accompaniments

Go to: [www.BriLeeMusic.com](http://www.BriLeeMusic.com)

Part-by-Part resources were created to allow you, the busy choral director, more time to do the things you need to do to be successful in rehearsal and performance.

Download the following FREE resources and use them to help you TEACH your singers.



- Part-dominant recordings allow your singers to sing along with their part while hearing the other voices in the background.
- Full chorus recordings allow your singers to see and hear the music at the same time for greater insight.
- Professional accompaniments can be used for rehearsal or performance.

**BriLee Music**  
*the Voice of Choral Music*

BL1101



6 80160 91212 4

Exclusively Distributed by  
**CARL FISCHER®**  
[www.carlfischer.com](http://www.carlfischer.com)