

THE SLENDER MOON

Three-Part Mixed Voices with Piano

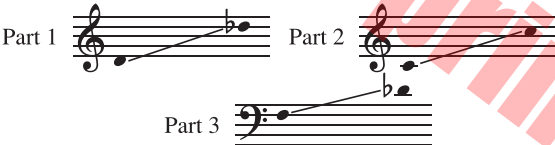
Greg Gilpin

BriLee Music
Part-by-Part



Free MP3 rehearsal and accompaniments
Go to: www.BriLeeMusic.com

Ranges:



Language: English
Use: General/Festival
Time: Approx. 2:54
*Difficulty: Moderate

BriLee Music
the Voice of Choral Music

Notes

The African-American poet, Joseph S. Cotter, Jr., has a rich life story. I would encourage each singer to study and learn about this remarkable man and his inspiring life. When reading Mr. Cotter's poem *Night Wind*, I was drawn to the image of the "slender moon" and his description of the sky around the crescent. The calmness and the quiet reminded me of growing up and gazing into the day and evening skies, dreaming.

This work should be approached with gentleness and tenderness. Like light drops of rain on water, the piano accompaniment is purposefully composed to be simple, with each note an important touch beneath the legato and harmony-rich vocals. Throughout the piece, rubato should be carefully woven as the text is interpreted, as it's a very important part of this piece. Some places are marked, while others should be designed by the director and choir.

As always, vowels are everything. This work should allow for good vowel teaching and soft consonant work for the singers.

If I could choose one word to describe this piece and your approach to learning and performing it, it would be "caring."

About the Composer

Originally from the "Show-Me" state of Missouri, Greg Gilpin resides in Indianapolis, Indiana. A graduate of Northwest Missouri State University with a Bachelor's Degree in Vocal Music Education, K-12, Greg is a well-known, ASCAP award-winning choral composer and arranger with hundreds of publications to his credit.

In demand as a conductor for choral festivals, all-district and all-state choirs, he is a member of NAFME and ACDA. At home, Greg is busy as a studio musician and producer in the recording industry.

The Slender Moon

for Three-Part Mixed Voices with Piano*

Lyrics *Night Wind* by
JOSEPH S. COTTER, JR.

GREG GILPIN

Tenderly, with much rubato (♩ = 63-66)

Piano

pp

Parts 1, 2

poco rit. *p* *a tempo*

The slen-der moon in its sil - v'ry sheen, the gold-en

Part 3

p

The slen-der moon in its sil - v'ry sheen, the gold-en

poco rit. *a tempo*

p

7

stars with the blue be - tween of a dream - y, sum-mer

stars with the blue be - tween of a dream - y, sum-mer

mp

mp

* Also available for SSA Voices (BL1009) and SATB Voices (BL1150)

10 *dim.* **poco rit.** *p*

sky; And still the night, the night winds sigh. The slender

dim. *p*

sky; And still the night, the night winds sigh. The slender

poco rit. *p*

13 **a tempo**

moon in its sil - v'ry sheen, the gold-en stars with the blue be -

moon in its sil - v'ry sheen. the gold- en stars with

moon in its sil - v'ry sheen. the gold - en stars with

a tempo

16 *mp* *dim.*

blue be-tween of a dream - y, sum-mer sky; And still the

mp *dim.*

blue be-tween of a dream - y, sum-mer sky; And still the

mp *dim.*

19 *poco rit.* *p* *più mosso (a tempo)* *mp*

night, the night winds sigh. With the sil-v'rymoon to

night, the night winds sigh. With the sil-v'ry

22 *poco rit.* *p* *più mosso (a tempo)* *mp*

whis-per to, and the gold-en stars to kiss, mid the blue of a

moon to whis-per to, gold-en stars to kiss, mid the blue,

25 *mf* *mp*

list - 'ning, sum - mer sky, for what should the night winds

list - 'ning, sum - mer sky, for what should the night winds

28 **poco rit.****a tempo**

p sigh? The slen - der

p sigh? The slen - der

poco rit.**a tempo**

p

31

moon in its sil - v'ry sheen, the gold-en stars with the blue be -

moon in its sil - v'ry sheen, the gold-en stars with the blue be -

34

mp tween of a dream - y, sum-mer sky; *dim.* And still the

mp tween of a dream - y, sum-mer sky; *dim.* And still the

mp *dim.*

37

p

night, the night winds sigh. And still the night, the night winds

night, the night winds sigh. And still the night, the night winds

p

40

sigh. The slen-der moon, the slen - der moon. The slen-der

sigh. The slen-der moon, the slen - der moon. The slen-der

43

*poco rit.**a tempo**rit.*

moon, the slen - der moon.

moon, the slen - der moon.

*poco rit.**a tempo**rit.*

pp

BriLee Music

the Voice of Choral Music

BriLee Music, founded by the late Brian Busch in 1997, is the leader in publishing choral music written specifically for the developing middle school and junior high singer.

With writing guidelines carefully developed by Brian, teachers who buy from the BriLee catalog know they will always find the following in music written by BriLee composers:

- Range appropriate – specifically for the adolescent changing voice
- Moderate in length
- Interesting, appealing and varied texts
- Accessible accompaniments

Writers for BriLee are among the most outstanding and respected in their field. The music is written, arranged and edited to meet a wide range of performance needs. The standard of musical excellence we present in each choral work is designed to meet the challenges faced by teachers and conductors all over the world who wish to offer quality, accessible repertoire to their ensembles.

BriLee Music **Part-by-Part**

Free MP3 rehearsal and accompaniments

Go to: www.BriLeeMusic.com

Part-by-Part resources were created to allow you, the busy choral director, more time to do the things you need to do to be successful in rehearsal and performance.

Download the following FREE resources and use them to help you TEACH your singers.



- Part-dominant recordings allow your singers to sing along with their part while hearing the other voices in the background.
- Full chorus recordings allow your singers to see and hear the music at the same time for greater insight.
- Professional accompaniments can be used for rehearsal or performance.

BriLee Music
the Voice of Choral Music

BL1141



6 72405 00992 8

Exclusively Distributed by
CARL FISCHER®
www.carlfischer.com